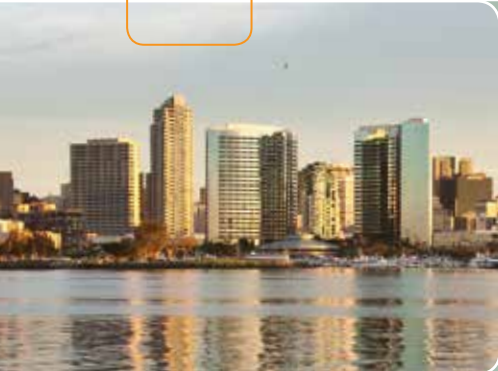


XPO

BANKERS HILL



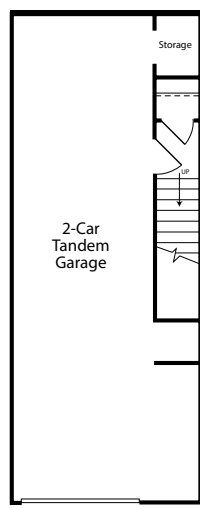
PLAN TWO

1,582 sq. ft. | 2 Bed + Loft | 2.5 Bath

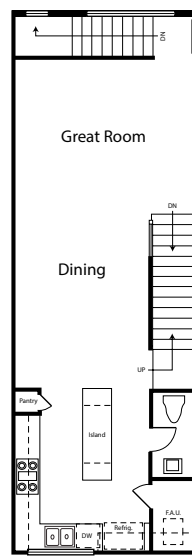


Banker's Hill – an intimate Uptown neighborhood. Where the urban vibe of the area has a modern edge and you live poised between Balboa Park at your

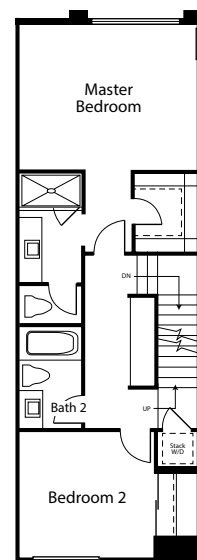
FIRST FLOOR



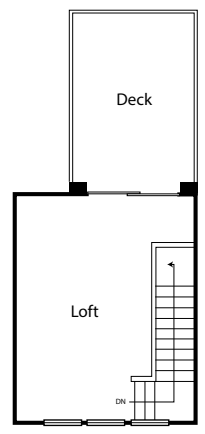
SECOND FLOOR



THIRD FLOOR



FOURTH FLOOR



Brokers welcome | For more information call: 619-228-5882 | XPOparkliving.com

*Prices subject to change without notice | BRE# 01895729

